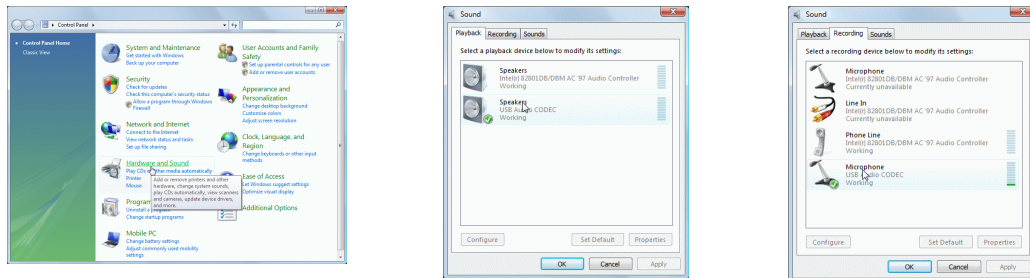
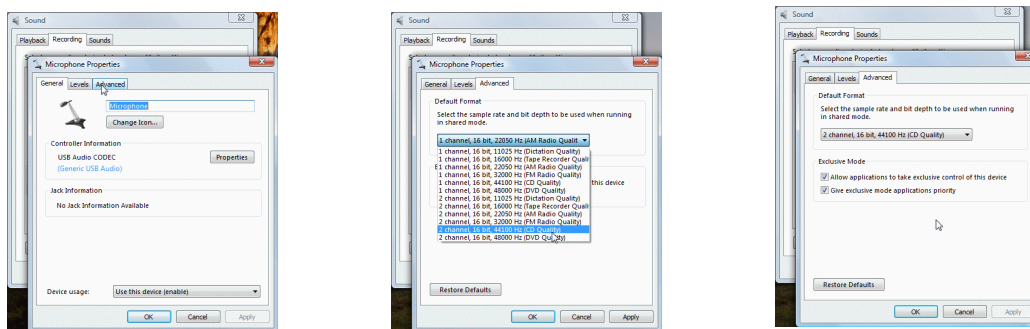


When Windows Vista installs the 'USB Audio Device' driver, the initial default will be set for 1 channel 22 kHz. This must be be changed for the Tester to operate properly. The changes made here may revert back if the operating system is updated, or a new audio device is installed.

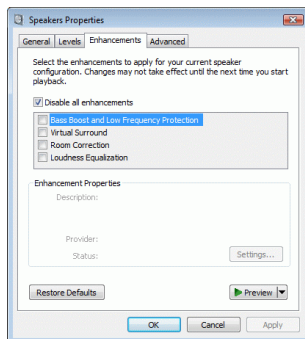
1. From the Start menu, open the Control Panel and select 'Hardware and Sound'. The Woofer Tester will be identified as using a 'USB Audio Codec'.
2. Click on the 'Recording' tab and look for the Microphone that uses the 'USB Audio Codec'.



3. Click on the microphone properties, and then select the 'Levels' tab.
4. Next, click on the 'Advanced' tab and change the settings to 2 channels, 44100 Hz sampling rate. Check the two 'Exclusive Mode' check boxes giving the tester application control of the device. Click **OK**.



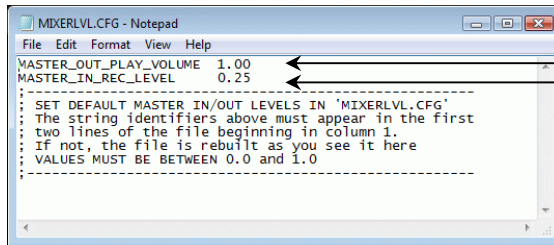
5. Repeat Step 4 for the 'Playback' tab (2 channel 44100 Hz sampling).
6. Go to the 'Enhancements' Tab and make sure that the 'Disable all enhancements' checkbox is selected.



7. Make sure that the Playback, Record and Woofer Tester sampling rates all match. 44100 Hz is the recommended sampling rate for Vista and is the default setting on the Woofer Tester. Sampling rates are changed in the *Options* pull-down menu or from the 'Comp & Size' tab in the Setup Control window.

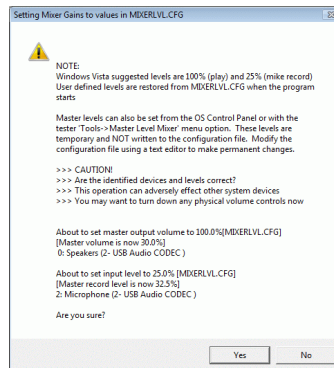
## Adjusting the Mixer Level

1. Windows Vista allows users to set different master volume levels for the various audio devices connected to the computer. By default, Vista requires the (microphone) input level to be set to 25% and the output to 100%. These settings are stored in a configuration file called "MIXERLVL.CFG" located in your Woofer Tester installation directory and can be configured by editing this file (you should not need to change this).



Edit volume settings in MIXERLVL.CFG file. Values are in % and range from 0 to 1.

2. If the startup mixer settings do not match the levels specified in the "MIXERLVL.CFG" file, the message shown below appears asking you to confirm the change. The current mixer levels can also be reset to the values in "MIXERLVL.CFG" by selecting the *Tools* → *Auto-Set* menu option.



3. The input and output levels can be temporarily changed for the session via the *Tools* → *Master Level Mixer* menu option. Note that these changes revert back to the levels set in the MIXERLVL.CFG after you close the application.

Adjust the volume with the UP and DN buttons

Adjust the volume by selecting the 'Manual Entry' checkbox and entering a value

